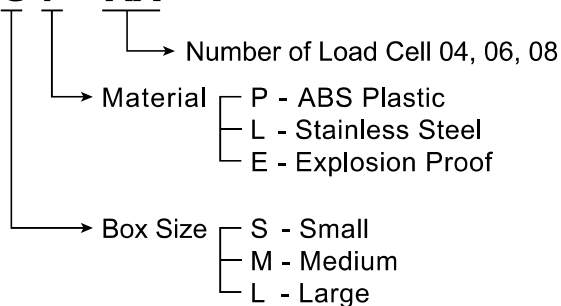


# SUMMING BOX

## SB - S P - XX



### Feature

- Excitation Trimming
- Easy to Wire with Each Terminals
- 4~8 Load Cells Summing
- Protection Class IP67
- Polymide Cable Gland
- Input Cable :  $\varnothing 5 \sim \varnothing 8 \text{mm}$
- Output Cable :  $\varnothing 5 \sim \varnothing 10 \text{mm}$
- Material : ABS Plastic / Stainless Steel Housing

	ABS Size	Loadcell Quantity
Small	130(L)x80(D)x35(H)	4EA
Medium	130(L)x130(D)x60(H)	4EA, 6EA
Large	180(L)x130(D)x60(H)	6EA, 8EA

Unit : mm

SB-SP-04



SB-MP-06



SB-LP-08



SB-ME-04 (Explosion proof)



SB-ML-04 (Stainless steel)



SB-ML-06 (Stainless steel)

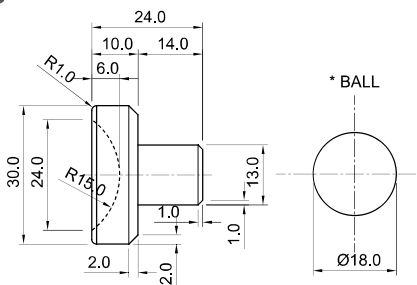


LOAD CELL

### ► Load cell Accessories



Ball & Ball Cup



Foot



RodEndBering